

	A ⁽⁴⁾	B	C ⁽⁴⁾	D	E	F	G	H	J	K	L	M	N	P	R
H221/3&4kW	528	(1) 283	140	196	(2) 160	100	(3) 135	100	(3) 135	2400 2400	10	86	160	45	
H221/4kW	548	290	215	215	190	112	132	132	132	2400	10	86	160	45	
H221/5.5&7.5kW	590	309	270	270	216	132	132	132	132	2400	10	86	160	45	
H221/9.2&11kW	627	178	328	210	335	254	160	160	160	2400	12	100	180	54	
H221/11&15kW	723	254	341	241	366	279	180	180	180	2400	16	125	160	54	
H221/18.5kW	822	407	305	405	318	200	200	200	200	2400	20	160	180	54	
H221/22kW	822	423	311	463	356	225	225	225	225	2400	20	160	180	54	
H221/30&37kW	943	442	349	516	406	250	250	250	250	2400	20	160	180	54	
H221/45kW	1021	464	368	516	457	280	280	280	280	2400	20	160	180	54	
H221/55kW	1105														
H221/75kW	1171														

(1) 25 H221 - 76mm
 40 H221 - 79mm
 50 H221 - 83mm
 65 H221 - 87mm
 80 H221 R - 90mm
 100 H221 - 91mm

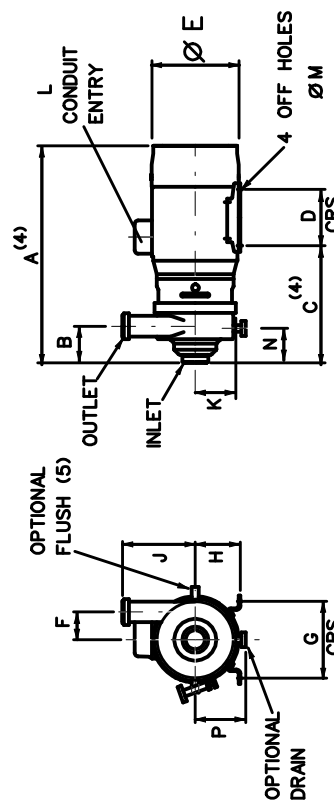
(2) 25 H221 - 115mm
 40 H221 - 111mm
 50 H221 - 108mm
 65 H221 - 104mm
 80 H221 R - 100mm
 100 H221 - 91mm

(3) 25,40,50 H221 - 180mm
 65, 80,100 H221 - 220mm

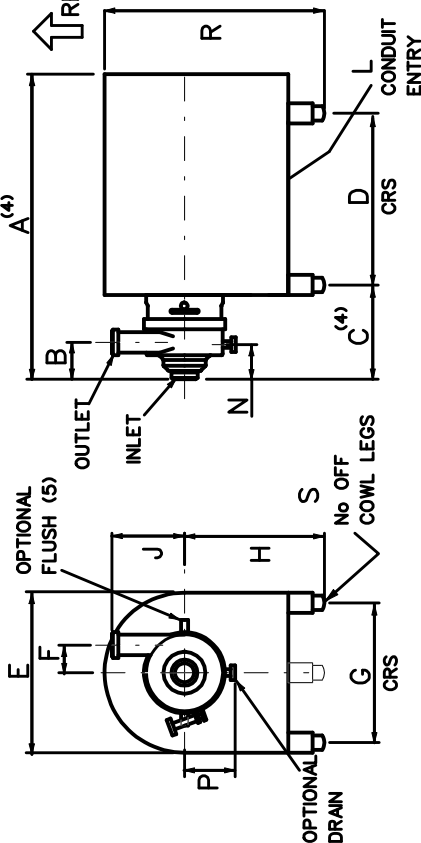
(4) FOR PUMPS WITH LOW PRESSURE FLUSH, OR EXTERNAL SEALS ADD DIMENSION 'R'

(5) FLUSH CONNS M10 DIAM. OP. ON HORIZ. CENTRE LINE

(6) 50 H221 - 109mm
 65 H221 - 113mm
 80 H221 R - 116mm
 100 H221 - 117mm



STANDARD PUMP
 DIMENSIONS A & E VARY ACCORDING TO MAKE OF MOTOR



COWLED PUMP

	A ⁽⁴⁾	B	C ⁽⁴⁾	D	E	F	G	H	J	K	L	M	N	P	R	S	T
H221/ TYPE 21 COWL	555	(1) 180	355	210	(2) 170	180	(3) 230	225	225	2400	86	160	350	3	45		
H221/ TYPE 25 COWL	608	150	440	250	230	225	225	225	225	2400	100	180	350	3	45		
H221/ TYPE 32 COWL	710	170	520	320	275	245	245	245	245	2400	100	180	350	3	45		
H221/ TYPE 39 COWL	830	240	570	390	254	280	280	280	280	2400	100	180	350	3	45		
H221/ TYPE 43 COWL	870	608	430	430	279	300	300	300	300	2400	100	180	350	3	45		
H221/ TYPE 520 COWL	977	(6) 171	670	520	461	370	370	370	370	2400	125	160	350	3	45		
H221/ TYPE 651 COWL	1250	355	570	650	545	460	460	460	460	2400	125	160	350	3	45		

(1) 25 H221 - 76mm
 40 H221 - 79mm
 50 H221 - 83mm
 65 H221 - 87mm
 80 H221 R - 90mm
 100 H221 - 91mm

(2) 25 H221 - 115mm
 40 H221 - 111mm
 50 H221 - 108mm
 65 H221 - 104mm
 80 H221 R - 100mm
 100 H221 - 91mm

(3) 25,40,50 H221 - 180mm
 65, 80,100 H221 - 220mm

(4) FOR PUMPS WITH LOW PRESSURE FLUSH, OR EXTERNAL SEALS ADD DIMENSION 'T'

(5) FLUSH CONNS M10 DIAM. OP. ON HORIZ. CENTRE LINE

(6) 50 H221 - 109mm
 65 H221 - 113mm
 80 H221 R - 116mm
 100 H221 - 117mm

H221 PUMP - DIMENSION DRAWING

MDM PUMPS LTD	Dr'n MR	Date 9/11/05
Ch'd DP	Scale	NTS

Spring Lane
 Malvern, Worcs
 England, WF14 1BP
 Tel 01684 892678
 Fax 01684 892841

