

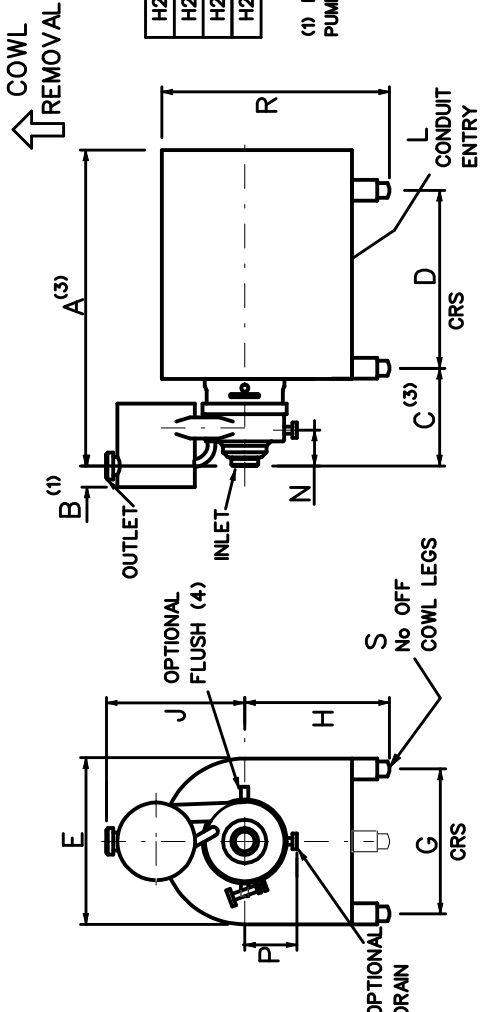
	A ⁽³⁾	B ⁽¹⁾	C ⁽³⁾	D	E	G	H	J	K	L	M	N	P	R
H221AS/5.5&7.5kW 132S FRAME	590	56	309	140	270	216	132	454	135	2xM32	10	86	160	45
H221AS/9.2&11k 132M FRAME	627	..	178
H221AS/11&15kW 180M FRAME	723	..	328	210	335	254	160	2xM40	12
H221AS/18.5kW 180L FRAME	767	..	254
H221AS/22kW 180M FRAME	822	..	341	241	366	279	180
H221AS/30&37kW 200L FRAME	943	..	407	305	405	318	200	2xM50	16	125	..	54

(1) FOR POLISHED PUMP ADD 87mm

(3) FOR PUMPS WITH LOW PRESSURE FLUSH, OR EXTERNAL SEALS ADD DIMENSION 'R'

(4) FLUSH CONNS M10 DIAM. OP. ON HORIZ. CENTRE LINE

STANDARD PUMP DIMENSIONS A & E VARY ACCORDING TO MAKE OF MOTOR



	A ⁽³⁾	B ⁽¹⁾	C ⁽³⁾	D	E	G	H	J	L	N	P	R	S	T
H221AS/ TYPE 32 COWL	710	56	170	520	320	275	245	454	2xM32	86	160	495	3	45
H221AS/ TYPE 39 COWL	830	..	240	570	390	254	280	..	2xM40	597	4	..
H221AS/ TYPE 43 COWL	870	..	608	430	279	300	640
H221AS/ TYPE 520 COWL	977	..	171	670	520	461	370	..	2xM50	125	..	763	..	54

(1) FOR POLISHED PUMP ADD 87mm

(3) FOR PUMPS WITH LOW PRESSURE FLUSH, OR EXTERNAL SEALS ADD DIMENSION 'T'

(4) FLUSH CONNS M10 DIAM. OP. ON HORIZ. CENTRE LINE

COWLED PUMP



MDM

MDM PUMPS LTD
Spring Lane
Malvern, Worcs
England WR14 1BP
Tel 01684 892578
Fax 01684 892841

Date	21/5/08
Ch'd	DP
Scale	NTS

H221/AS PUMP - DIMENSION DRAWING