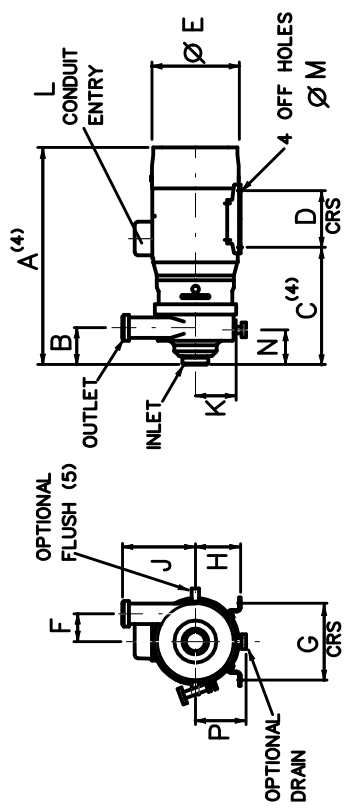


DIMENSIONS SUBJECT TO CHANGE WITHOUT NOTIFICATION

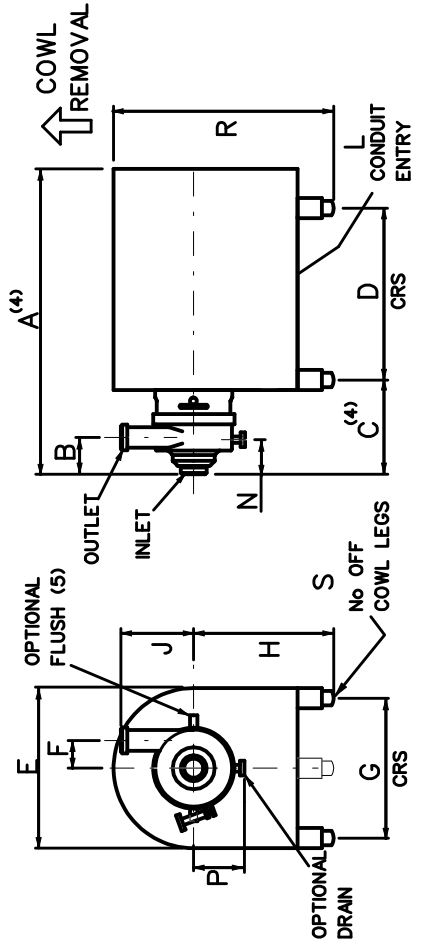
DIMENSIONS SHOULD NOT BE USED FOR INSTALLATION PURPOSES UNLESS SPECIFICALLY ENDORSED



STANDARD PUMP
DIMENSIONS A & E VARY ACCORDING TO MAKE OF MOTOR

	A ⁽⁴⁾	B	C ⁽⁴⁾	D	E	F	G	H	J	K	L	M	N	P	R
H161/1.5kW	487	(1) 276	100	180	(2) 140	90	(3)	105	105	105	10	86	130	45	
H161/2.2kW	526	..	125
H161/3&4kW	548	..	283	140	196	..	160	100
H161/4kW	590	..	290	..	225	..	190	112
H161/5.5&7.5kW	627	..	309	..	270	..	216	132	2xM32
H161/9.2&11kW	723	..	178
H161/11&15kW	767	..	328	210	335	..	254	160	2xM40	12
H161/18.5kW	822	..	254
H161/22kW	822	..	341	241	366	..	279	180

- (1) 25 H161 - 76mm
- 40 H161 - 79mm
- 50 H161 - 83mm
- 65 H161 - 87mm
- 80 H161 R - 90mm
- 100 H161 - 94mm
- (2) 25 H161 - 88mm
- 40 H161 - 85mm
- 50 H161 - 81mm
- 65 H161 - 77mm
- 80 H161 R - 74mm
- 100 H161 - 64mm
- (3) 25,40,50 H161 - 180mm
- 65, 80,100 H161 - 220mm
- (4) FOR PUMPS WITH LOW PRESSURE FLUSH, OR EXTERNAL SEALS ADD DIMENSION 'R'
- (5) FLUSH CONNS M10 DIAM. OP. ON HORIZ. CENTRE LINE



COWLED PUMP

	A ⁽⁴⁾	B	C ⁽⁴⁾	D	E	F	G	H	J	L	N	P	R	S	T
H161/ TYPE 21 COWL	555	(1) 180	355	210	(2) 170	180	(3)	230	225	..	86	130	350	3	45
H161/ TYPE 25 COWL	608	..	150	440	250	..	230	225	44.3
H161/ TYPE 32 COWL	710	..	170	520	320	..	275	245	..	2xM32	495
H161/ TYPE 39 COWL	830	..	240	570	390	..	254	280	..	2xM40	597	4	..
H161/ TYPE 43 COWL	870	608	430	..	279	300	640

- (1) 25 H161 - 76mm
- 40 H161 - 79mm
- 50 H161 - 83mm
- 65 H161 - 87mm
- 80 H161 R - 90mm
- 100 H161 - 94mm
- (2) 25 H161 - 88mm
- 40 H161 - 85mm
- 50 H161 - 81mm
- 65 H161 - 77mm
- 80 H161 R - 74mm
- 100 H161 - 64mm
- (3) 25,40,50 H161 - 180mm
- 65, 80,100 H161 - 220mm
- (4) FOR PUMPS WITH LOW PRESSURE FLUSH, OR EXTERNAL SEALS ADD DIMENSION 'T'
- (5) FLUSH CONNS M10 DIAM. OP. ON HORIZ. CENTRE LINE

MDM PUMPS LTD

Spring Lane
Malvern, Worcs
England, WR14 1BP
Tel. 01684 892678
Fax 01684 892841

Date	9/11/05
Ch'd	HL
Scale	NTS



H161 PUMP - DIMENSION DRAWING