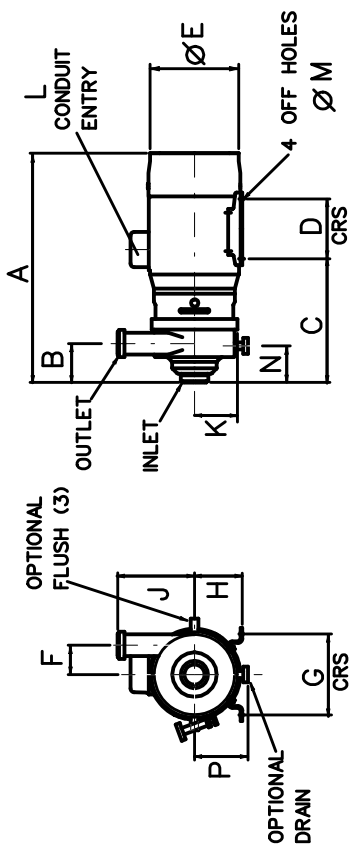


	A	B	C	D	E	F	G	H	J	K	L	M	N	P
D6A/118/15kW	911	157	524	210	335	(1) 254	160	(2) 160	160	12	165	168	165	168
D6A/18.5kW
D6A/22kW	973	..	537	241	366	..	279	180
D6A/308.37kW	1116	..	549	305	405	..	318	200	..	160	16
D6A/45kW	1261	..	565	311	483	..	356	225

(1) 1.5" D6A - 123mm
2"x3.3" D6A - 115mm
4" D6A - 81mm

(2) 1.5" D6A - 205mm
2"x3.3" D6A - 215mm
4" D6A - 250mm

(3) FLUSH CONNS 1/4"BSPP
DIAM. OP. ON
HORZ. CENTRE LINE



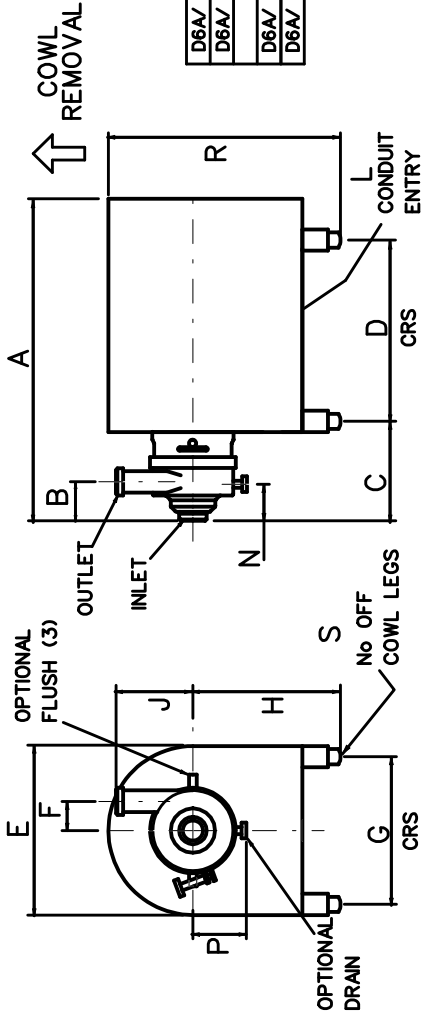
STANDARD PUMP DIMENSIONS A & E VARY ACCORDING TO MAKE OF MOTOR

	A	B	C	D	E	F	G	H	J	L	N	P	R	S
D6A/ TYPE 39 COWL	1018	157	436	570	390	(1) 254	280	(2) 165	168	617	4
D6A/ TYPE 4.3 COWL	1056	..	436	608	430	..	279	300	640	..
D6A/ TYPE 520 COWL	1217	157	305	670	520	(1) 461	370	(2) 165	168	763	4
D6A/ TYPE 651 COWL	1390	..	489	570	650	..	545	460	973	..

(1) 1.5" D6A - 123mm
2"x3.3" D6A - 115mm
4" D6A - 81mm

(2) 1.5" D6A - 205mm
2"x3.3" D6A - 215mm
4" D6A - 250mm

(3) FLUSH CONNS 1/4"BSPP
DIAM. OP. ON
HORZ. CENTRE LINE



COWLED PUMP

MDM PUMPS LTD	Date	17/9/99
Spring Lane	MR	
Milvern, Worcs	Ch'd	HL
England WR14 1BP	Scale	NTS
Tel 01684 892678		
Fax 01684 892841		



D6A PUMP - DIMENSION DRAWING