

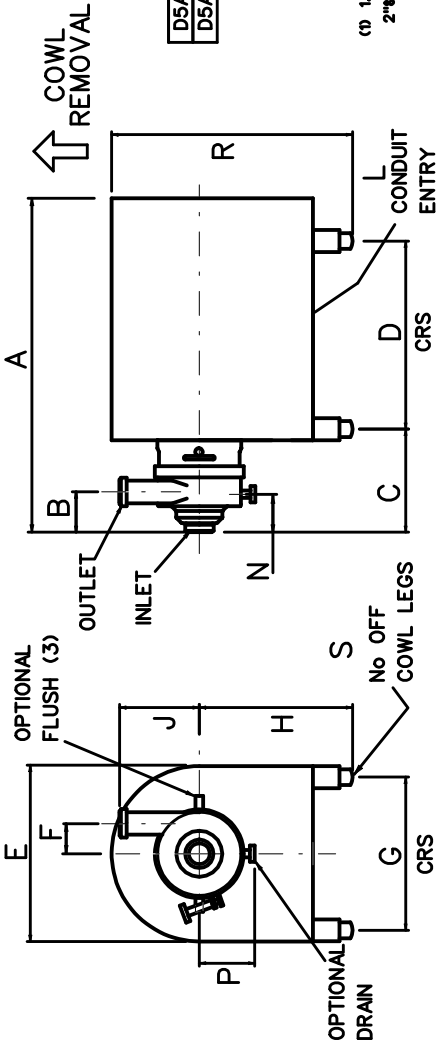
	A	B	C	D	E	F	G	H	J	K	L	M	N	P
D5A/18.5kW	921	157	526	254	335	(1) 254	160	(2) 197	180	12	167	215		
D5A/22kW	1020	..	539	241	366	..	279	180	..	..	..	..	..	..
D5A/30&37kW	1087	..	551	305	405	..	318	200	..	2480	16	..	..	..
D5A/45kW	1165	..	567	311	463	..	356	225	..	..	..	..	..	..
D5A/55kW	1250	..	586	349	516	..	406	250	..	2483	20	..	..	..
D5A/75kW	1270	..	608	368	..	..	457	280	..	..	..	..	..	..

(1) 1.5" D5A - 174mm  
 2"x3.3" D5A - 160mm  
 4" D5A - 127mm

(2) 1.5"x2"x3.3" D5A - 260mm  
 4" D5A - 285mm

(3) FLUSH CONNS 1/4"BSPP  
 DIAM. OP. ON  
 HORIZ. CENTRE LINE

STANDARD PUMP DIMENSIONS A & E VARY ACCORDING TO MAKE OF MOTOR



	A	B	C	D	E	F	G	H	J	K	L	M	N	P	R	S
D5A/ TYPE 520 COWL	1221	157	307	1670	520	(1) 461	1370	(2) 1687	1687	1687	763	4	..	..	..	..
D5A/ TYPE 651 COWL	1394	..	491	1570	1650	..	545	1460	..	..	..	..	..	..	..	..

(1) 1.5" D5A - 174mm  
 2"x3.3" D5A - 160mm  
 4" D5A - 127mm

(2) 1.5"x2"x3.3" D5A - 260mm  
 4" D5A - 285mm

(3) FLUSH CONNS 1/4"BSPP  
 DIAM. OP. ON  
 HORIZ. CENTRE LINE

COWLED PUMP

MDM PUMPS LTD	Mr	Date	21/10/03
Spring Lane	Ch'd	Date	21/10/03
Melvern, Worcs	DP	Scale	NTS
England, WR14, 1BP			
Tel: 01684 892878			
Fax: 01684 892841			



D5A PUMP - DIMENSION DRAWING